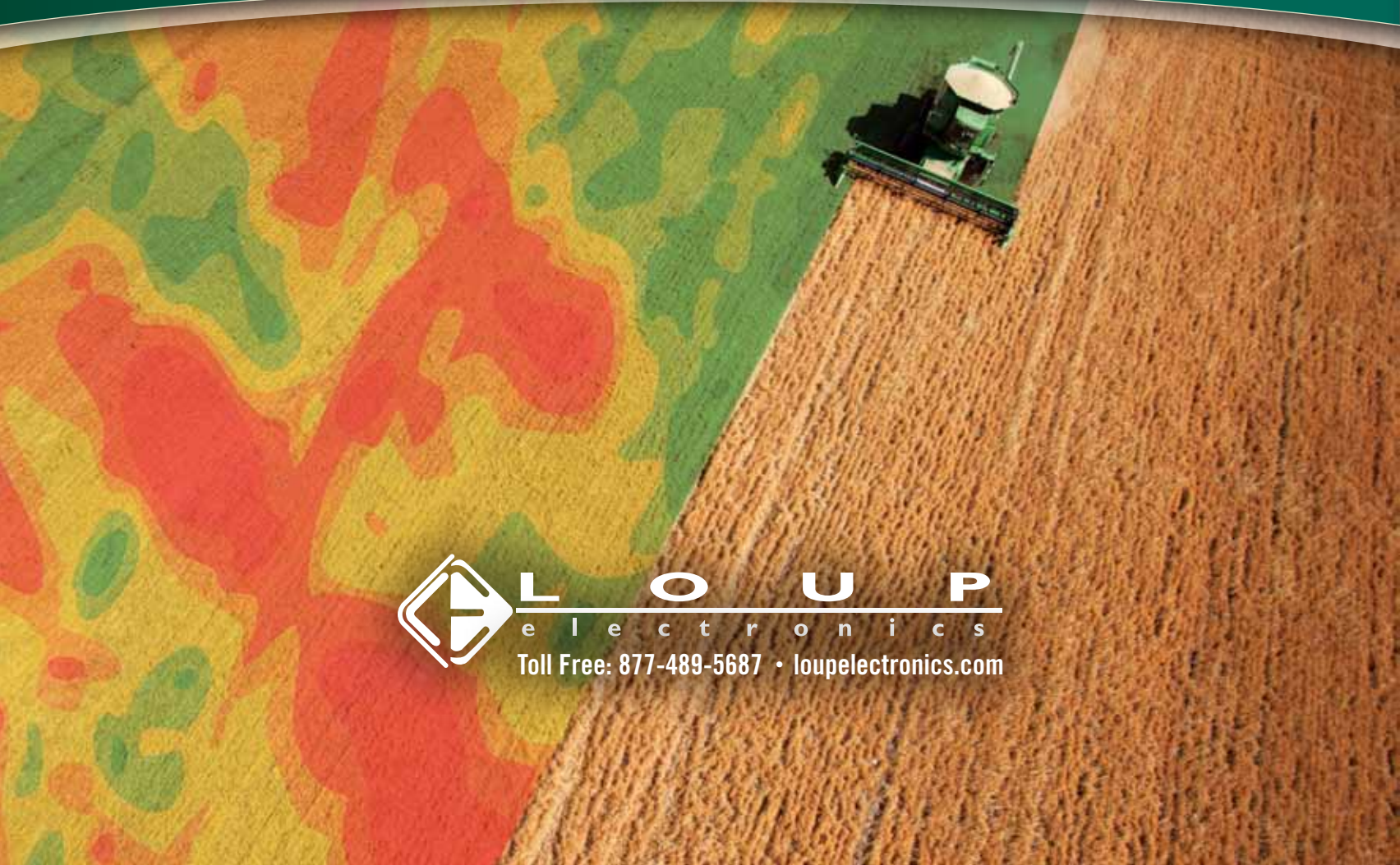




2019 PRICE LIST

SUPERSEDES ALL PREVIOUS



L O U P
e l e c t r o n i c s

Toll Free: 877-489-5687 • loupelectronics.com



LOUP II DRILL MONITOR

DISPLAY FEATURES

The Loup II Drill Monitor allows the user to choose and display up to three functions simultaneously. User-friendly menus allow the user to change what is being displayed, turn sensors on and off, and change any drill settings.

- ◆ True population readings to 32 rows
- ◆ Fan, Shaft RPM, and Hopper Level
- ◆ 192 rows of Blockage
- ◆ 95% Accurate in Soybeans
- ◆ View 3 display options on one screen
- ◆ Menu driven for easy operation

Complete System Examples	Price
15ft - 20ft drill: Console, 4 Population Sensors, Harness and Ground Speed Kit	\$1696.00
2 Section Drill: Console, 4 Population Sensors, Folding Harness and Ground Speed Kit	\$1796.00
3 Section Drill: Console, 6 Population Sensors, Folding Harness and Ground Speed Kit	\$2044.00

Description	Price
Loup II Base System Includes: Loup II Drill Monitor Console and Console Control Cable	\$1050.00
1/2 PAC 1 Population Control Option (John Deere & Great Plains Drills only)	\$760.00
1/2 PAC 2 Population Control Option (John Deere & Great Plains Drills only)	\$1150.00
Seed Counting Sensor	\$99.00
Air Seeder Seed Sensor	\$102.00
Hopper Level Sensor	\$85.00
Fan Sensor	\$100.00
Drill Mounted Ground Speed Sensor Kits: Specify Make and Model. All kits include Magnetic Ground Speed Sensor, Actuator, Mounting Bracket & Hardware.	\$125.00
Radar "Y" Cable (See Ordering Notes)	\$85.00
Lift Switch Kit (See Ordering Notes)	\$185.00
Shaft Sensor Kits: Specify Make and Model. All kits include Shaft Sensor, Actuator, Mounting Bracket & Hardware	\$150.00
Blockage Monitoring Blockage Sensor	\$45.00
Blockage Monitoring Module Blockage Module (connects up to 16 991001 to system)	\$295.00
Blockage Monitoring Harness Blockage Harness configured for corresponding module	\$150.00
External Alarm	\$62.00



8000i YIELD MONITOR

DISPLAY FEATURES

Universal Yield Monitor for any Make or Model combine.

- ◆ Yield (Bushels per Acre)
- ◆ Grain Moisture Content (% Moisture)
- ◆ Create GPS Field Maps (Kit Sold Separately)
- ◆ Field and Total Bushels
- ◆ Built in SD Drive for Data Logging
- ◆ Non-Contact Field Proven Yield Sensor

Base Yield Monitor System	\$3380.00
Data Logging Package Add-on	\$400.00
Door-Mount Moisture Sensor Add-on	\$395.00
Side-Mount Moisture Sensor Add-on	\$1200.00
Optional Proximity Header Cutout Sensor	\$125.00
Magnetic Mount	\$80.00
Magnetic Mount	
Save about an hour of install time by using Magnetic Mounts for the optical yield sensors.	



ISOBUS YIELD

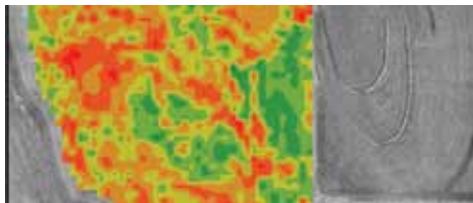
DISPLAY FEATURES

Add Yield Monitoring Capability to select ISOBUS virtual terminals.

ISOBUS Yield Kit (Yield and Mapping only)	\$3200.00
Side Mount Moisture Sensor Add-on	\$1100.00
ISOBUS Yield ECU Only	\$2400.00



Yield Sensor Installation



Sample Yield Map Report



Side Mount Moisture Sensor Installation



MOISTURE MONITOR

Moisture Monitor System System Includes Moisture Monitor Console, Moisture Sensor & Wire Harness. Please specify auger size when placing order.	\$1500.00
Moisture Sensor The Moisture Sensor can be mounted directly to the bottom of a "bubble up" auger on a combine WITHOUT cutting any flighting.	

GPS RECEIVERS/SPEED ADAPTERS



A101 GPS Receiver

Description	Price
Sky Speed GPS-Radar Interface	\$165.00
Hemisphere A101 Smart Antenna	\$1,250.00
Sky Speed with Model 16 HVS receiver	\$380.00



Sky Speed Adapter



16 HVS Receiver



Shaft Monitor

SHAFT MONITORS

Description	Price
2 Shaft Monitor	\$760.50
3 Shaft Monitor	\$878.75
Six Shaft Monitor with R.P.M	\$699.00
Additional Shaft Sensor for Shaft Speed Six	\$75.00



Shaft Speed 6

*Shaft must turn a minimum of 30 RPM.



Loupe Acre Counter

ACRE COUNTERS

Description	Price
Battery Powered Acre Counter	\$199.00
SAM 100 Speed Area Meter	\$499.00
System includes Battery Power Acre Counter, 12' lead to magnetic Switch and strap on magnet actuator. Brackets will be the responsibility of the dealer or end user. Snap on magnetic actuators available at additional cost.	



Speed Area Meter

WARRANTY & SERVICE AGREEMENT

Loup Electronics warrants to the original purchaser that, if any part of the product proves defective in material or workmanship within one (1) Year from the date of purchase, and is returned to Loup Electronics within 30 days after the defect is discovered, Loup Electronics will (at its option) repair or replace said part. Product shipped to Loup Electronics freight prepaid will be returned freight prepaid. Product shipped to Loup Electronics freight collect will be returned freight collect.

LIMITATIONS:

Warranty does not apply to parts or products that are damaged as a result of misuse, neglect, accident or fire, or of lightning, flooding or other acts of God, or by improper installation or maintenance, of which Loup Electronics will be the sole judge. Warranty does not apply to parts or products that have been modified by an unauthorized party that has in Loup Electronics' judgment affected their performance or reliability. Warranty does not apply if the part or product substantially fulfills the performance specifications.

EXCLUSION OF OTHER WARRANTIES AND REMEDIES:

THIS WARRANTY IS IN LIEU OF AND EXCLUDES ALL OTHER WARRANTIES EITHER EXPRESS OR IMPLIED BY OPERATION OF LAW OR OTHERWISE. THE SOLE AND EXCLUSIVE REMEDY AGAINST LOUP ELECTRONICS SHALL BE FOR THE REPAIR OR REPLACEMENT OF DEFECTIVE PARTS AS PROVIDED, AND NO OTHER REMEDY (INCLUDING BUT NOT LIMITED TO INCIDENTAL, SPECIAL, INJURY TO PERSONS OR PROPERTY, OR ANY OTHER LOSS) SHALL BE AVAILABLE.

Loup Electronics neither assumes nor authorizes anyone to assume for it any other obligation or liability in connection with said part or product.

SERVICE

In Warranty and Out of warranty service is available through Loup Electronics or Loup Electronics authorized and trained warranty & service depots.



3030 N. 40th St. Lincoln, NE 68504

Toll Free: 877-489-5687 • www.loupeelectronics.com